



Operational Plan for qplex

Responsibility – Arenas and Pool – Community Services Department PHASE 6.1 return to YELLOW December 11, 2020.

1. INTRODUCTION

- a. The Town of Quispamsis will continue to follow the Provincial State of Emergency, the Provincial Recovery Plan, and the guidance and direction of the Office of the Chief Medical Officer of Health (CMOH) as its recreation facilities are re-opened during the COVID-19 pandemic.
- b. The following document outlines the various roles and responsibilities of ice user groups at the qplex.
- c. The current phase of this plan (Phase 6) will allow more activities to return to the qplex. Nonmedical faces masks must be worn upon entering the facility, until the time that the skaters take to the ice.
- a. ***A screening process is required for the arena given the likelihood of more than 50 persons being in the facility at the same time. Screening and contact tracing are the responsibility of the user group.***
- d. Physical distancing measures of 2 metres will be required unless exempted as per CMOH guidelines. Traffic flow and disinfecting measures will be implemented. The Town of Quispamsis will limit access to areas of the facility either due to inability to ensure physical distancing, as per the Provincial Order, or to manage the facility with limited resources in the face of added requirements in response to COVID-19.
- e. Future phases of this Operational Plan will also follow the Provincial State of Emergency, the Provincial Recovery Plan, and the guidance and direction of the Office of the Chief Medical Officer of Health as changes happen.

2. ON ICE MEASURES

- a. Each group on the ice shall be represented by an organization or oversight agency with an Operational Plan that the group is expected to follow. These plans shall follow the guidance of the CMOH. Operational Plans shall be provided to the Town of Quispamsis prior to on ice activities and must align with the Town of Quispamsis's Operational Plan and applicable governing provincial or national sport bodies.
- b. The current Provincial Mandatory Order allows sports to be played when done in compliance with the CMOH guidelines. It is recognized that when sports are played that 2 metres may not always be maintained between participants. As per the requirements of the Chief Medical Officer of Health, a risk mitigation plan must be developed by the group booking ice.

3. OFF ICE MEASURES

- a. **Lobby area, player's entrance and general traffic flow**
The qplex main lobby will not be accessible. Parents, guardians, spectators will be permitted access through the players entrance, then proceed to assigned dressing room. They must then continue up stairs to the designated seats in sections A – H.
Markings and/or signage within the facility has been installed to further limit cross flow of traffic.
- b. **Signage**
In addition to controlling traffic flow, signage will be posted throughout the facility to emphasize the importance of frequent handwashing and proper hygiene practices.

Initial _____



c. Spacing between user groups

Users are to arrive no more than 30 minutes before scheduled on ice time and leave as soon as possible following the end of the game, no later than 30 minutes. No gathering in the parking lot.

d. Food and beverages

Food and beverage services will not be available during this phase through the canteen service provider.

Water bottles should be filled prior to coming to the facility. There will be no sharing of water containers.

e. Storage

All exercise and/or drill equipment must be sanitized before and after each use (this being the responsibility of the user group) There is no storage of equipment on site.

f. Dressing rooms

Dressing rooms will be available with limitations in place regarding capacity. Washrooms within the dressing rooms will be available, however they are to be used at your own risk. Showers are not available at this time.

g. Participants who can arrive dressed will be directed to an area of the stands to complete preparations for their on-ice activity.

h. Warm up areas

If a group wishes to warm up off ice, they must keep in mind the 30-minute arrival time, and they must warm up outside of the facility or within the allocated dressing room. No gathering in the parking lot, hallways or common areas.

i. Spectators/Guardians - Games

Spectators/Guardians must enter through the player's entrance

Spectators/guardians will be limited to two per player and must maintain physical distancing of 2 metres while in the arena.

A maximum of 10 accredited scouts are permitted to attend games, which does not impact the two spectators per participant rule. All scouts must be included in the Home Team's contact tracing documents.

Spectators can only access the facility 15 minutes prior to game time entering through the player's entrance. When inside the player entrance lobby they must register with a Home Team liaison, providing name and phone number for contact tracing as per the Provincial requirements, then travel up the orange stairwell to the designated seating areas in section A -H. Spectators are not permitted to view the activity from any other area within the facility and must remain seated at all times.

It is assumed that two people sitting together are within the family bubble and you are asked to leave 3 seats between you and the next two people to ensure a 2m separation

Non-medical masks must be worn while in the facility at all times.

Once the ice time is over spectators/guardians will exit the arena via the same path as they entered.

j. Spitting

There is no spitting permitted in the facility.

k. Facility sanitizing

Frequent cleaning and disinfecting of commonly touched surfaces such as interior and exterior door handles and railings will be completed by the Town staff.

Washrooms will be cleaned and sanitized on a regular basis throughout the day by Town staff.

Benches, ice rink gate handles, penalty boxes and the scorekeeper's booth will be sanitized by

Initial _____



Town staff between each user group, unless these areas are not used. All other sanitizing is the responsibility of the licensee or user group, i.e., washroom if utilized. It is strongly recommended that users bring individual hand sanitizer for personal use.

l. Hand washing facilities

Hand washing is available in the public washrooms located off the walking track. Washrooms in the main lobby are closed.

m. Water fountains are not available.

n. Employee Interactions

Physical distancing of 2 metres between employees and the public is mandatory. Face masks will be used by the employees at all times. Individuals that come within 2 metres of Town employees without wearing a mask will be asked by the employee to correct behaviour by putting on a mask or they will be required to leave the facility.

o. Employee Screening

The Town of Quispamsis has implemented a self screening process following specific screening questions prior to the start of shift, including a temperature check (digital thermometer will be provided to staff).

p. Patron Screening

Patrons entering the facility are required to document, the date, time, and their contact information through a screening process. It will be the responsibility of the group renting the facility to manage this information and supply to Public Health when requested. Any patron/participant showing symptoms shall not enter the facility and should immediately return home and call 811.

4. ILLNESSES OR SYMPTOMS OF STAFF AND PATRONS/PARTICIPANTS

a. Patron / Participant - Should a patron / participant develop symptoms during their time in the facility, they must leave the facility immediately and contact 811 and follow their direction.

b. Should they be tested and found positive for COVID-19, we will follow the communication protocols recommended by the CMOH.

c. Staff – If a Staff member develops symptoms of COVID-19, they will leave the facility and immediately contact their Supervisor, Manager or Director. The affected employee will be required to contact 811 as recommended by the CMOH. Additional measures provided by the Town's Human Resources Department will be followed.

Regional Public Health will be involved to manage any instances or outbreak and ensure contacts are identified; public health measures are in place and will lead any communication that is required.

5. Closure of the Arena

A closure may be directed if there is a COVID-19 outbreak, a change in the Provincial Mandatory Order, or in any other case as directed by the CMOH. The facility will close and cannot reopen until authorized by the CMOH.

User groups may lose access to the arena if they do not follow this Operational Plan in addition to their own.

Initial _____



6. Acknowledgement of Town’s Operational Plan

- a. User groups will be provided a copy of the qplex COVID-19 Operational Plan and must sign that they have read and agreed to the plan. It is the responsibility of the individual renting the ice to disseminate the information to all their users and ensure that they clearly understand the protocols in place and know what to expect before arriving at the facility.
- b. All groups and or organizations must also provide to the Town of Quispamsis an operational plan for review and approval.
- c. ***Both operational plans (Town of Quispamsis and Organization/Groups) must be adhered to by the users.***
- d. Individual ice rental users must abide by the qplex operational plan.

7. Attachment:

- a. Town of Quispamsis Traffic Flow Plan.

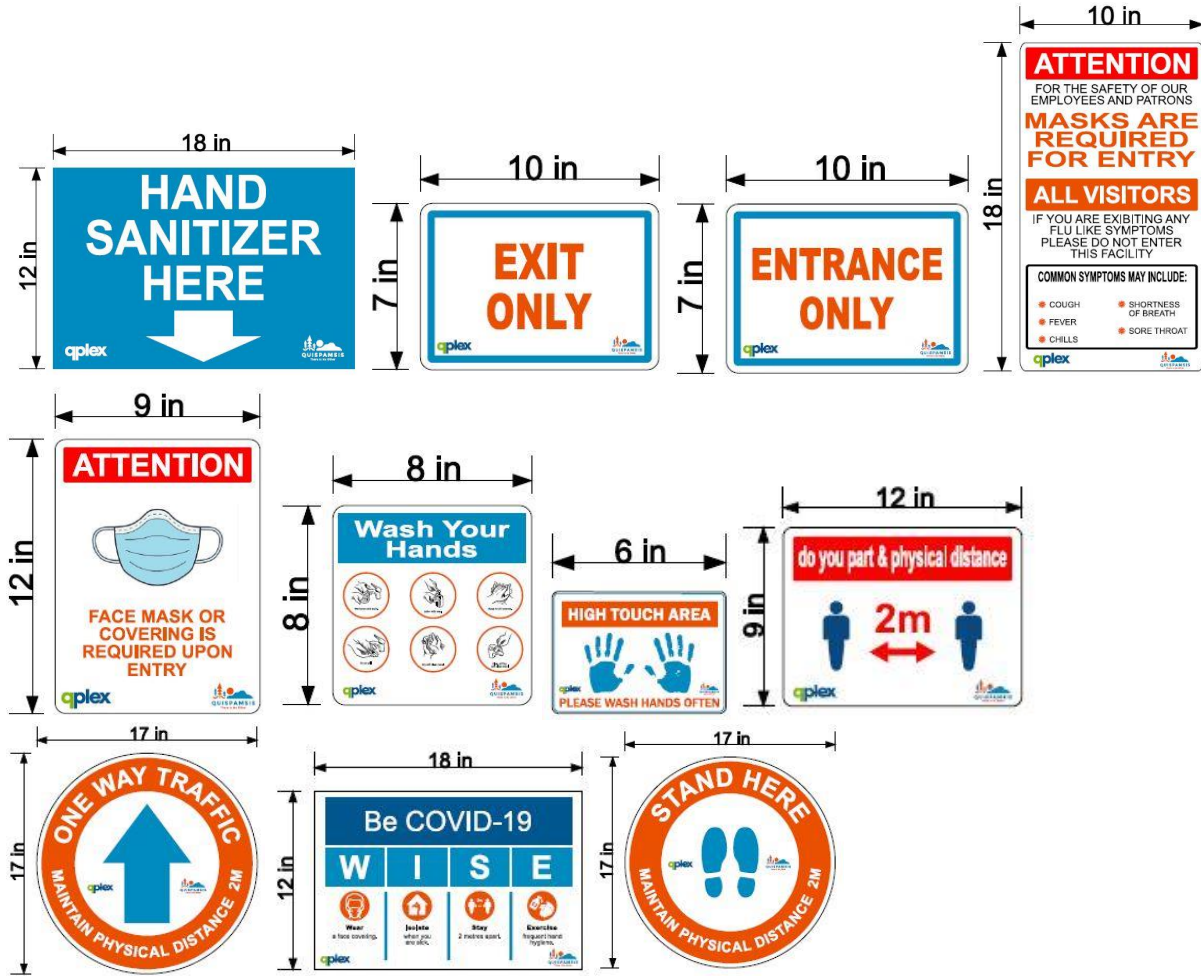
Signature _____

Date _____

Initial _____



Signage has been adjusted to 2m – will adjust on Op Plan.



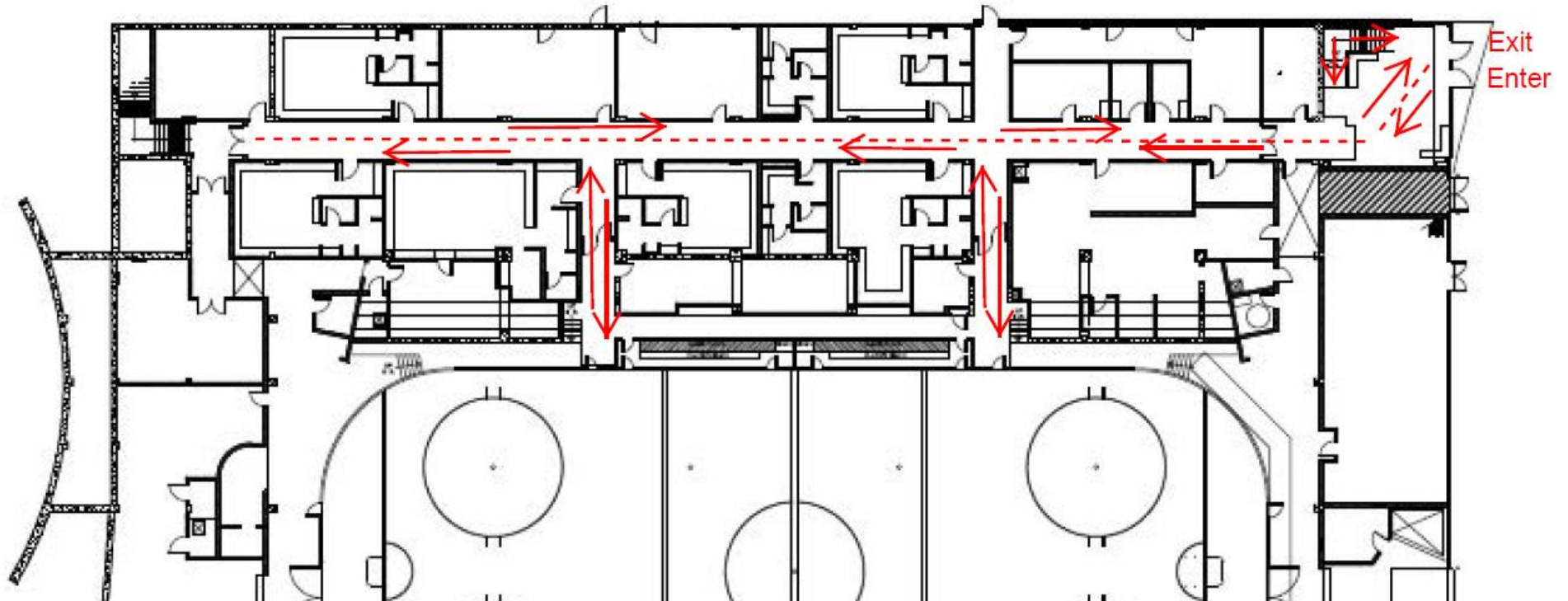
All areas equipped with appropriate signage above.

For dates of sign installation please see sign location checklist I:\12 Rec Sport Cultural 3200-3399\Recreational and Sport Facilities Operations 3270\General info\COVID - 19\Facilities documents\Sign Locations

Initial _____



qplex Lower Level Traffic Flow



Initial _____